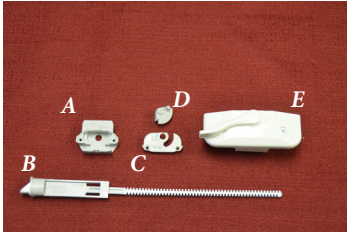
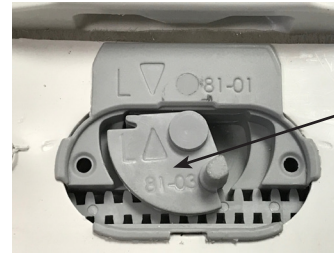


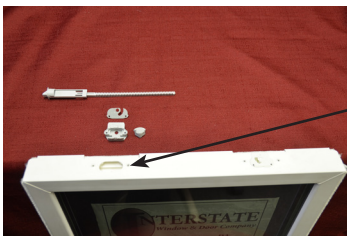
# Installation Guide for RoboSync Lock Replacement



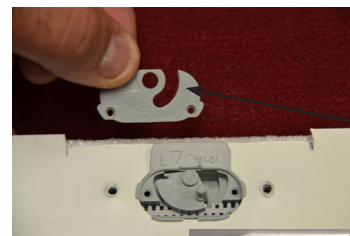
1. Parts Marked L (left, gray colored) & R (right, white colored)
- Cup (A)
  - Tilt Latch (B)
  - Tilt Latch Actuator (C)
  - Cup Cover (D)
  - RoboSync Lock (E)



5. Tilt Latch Actuator installed



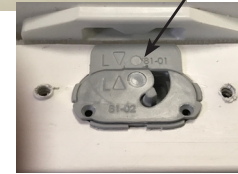
2. Left Side



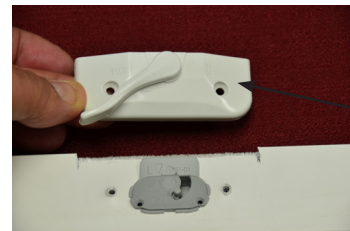
6. Cup Cover installed



3. Cup inserted



4. Tilt Latch inserted into Cup from left



7. RoboLock positioned



9. RoboSync Lock in place