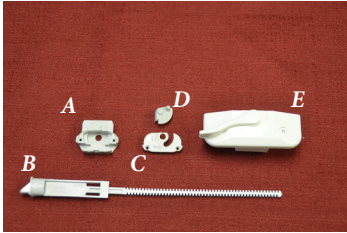
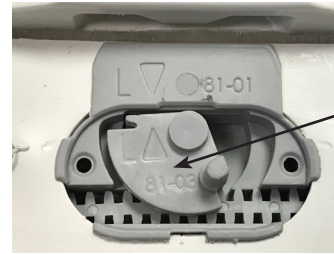


Installation Guide for RoboSync Lock Replacement

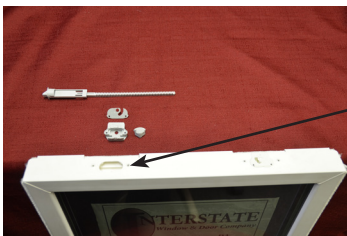


1. Parts Marked L (left, gray colored) & R (right, white colored)
- Cup (A)
 - Tilt Latch (B)
 - Tilt Latch Actuator (C)
 - Cup Cover (D)
 - RoboSync Lock (E)

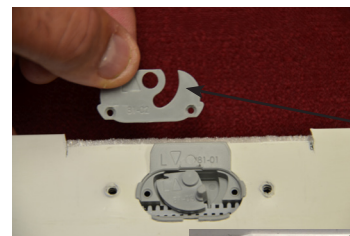


5. Tilt Latch Actuator installed

Note the position of the opposing arrows to assure gear alignment & ease of operation.



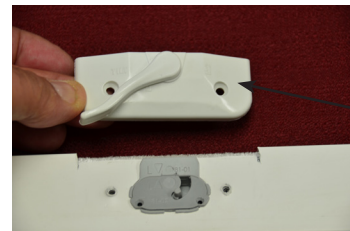
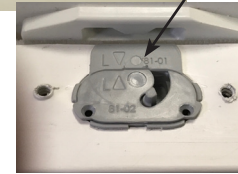
- Internal Parts are color coded
2. Left Side - gray
Right Side - white



6. Cup Cover installed



3. Cup inserted as shown



7. RoboLock positioned



4. Tilt Latch inserted into Cup from left



9. RoboSync Lock in place