

Patio Door Fixed Panel Clip Installation Instructions

In package

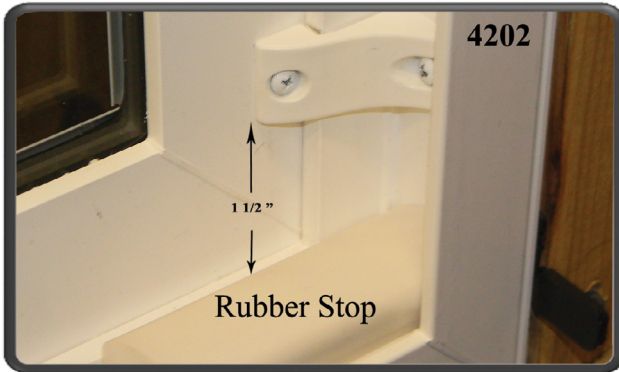
- 2 - Fixed Panel Clips
- 2 - #8 x 1" pan head screws
- 2 - #8 x 2 1/2" pan head screws
- 1 Installation Instructions

INSTRUCTIONS

- Install door according to instructions supplied.

4202 Model

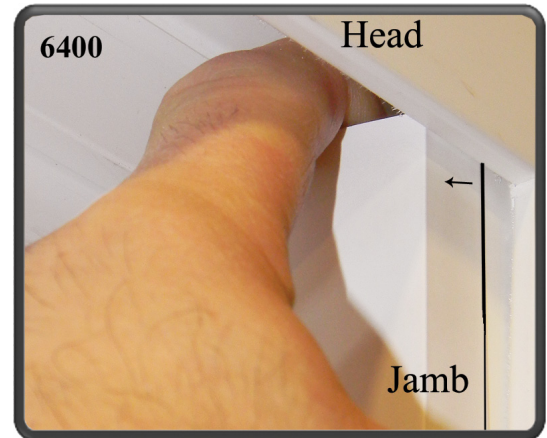
- Remove rubber stop from head and sill; measure up 1 1/2" from top of sill dam leg and mark location with pencil.



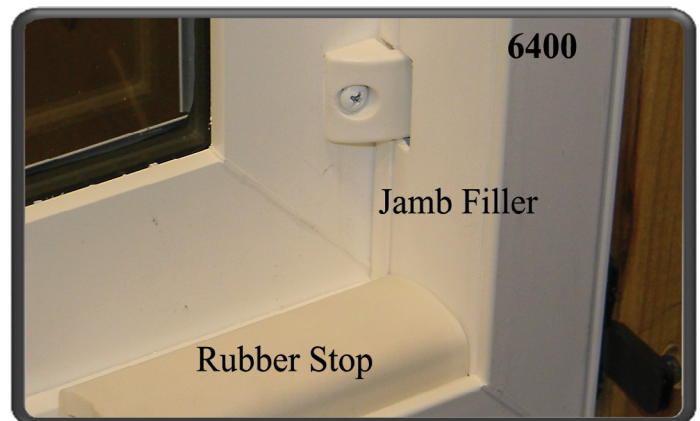
- Place Panel Clip in jamb and align bottom of clip with pencil mark and mark screw hole. Drill 1/8" pilot hole and apply 1- #8 x 1" white pan head screw through clip.
- Next pilot hole through jamb into the subjamb and apply 2 1/2" pan head screw through the clip into the jamb. Repeat at head end of sash.

6400 Model

- Remove rubber stops from head and sill and check to assure that jamb cover is making contact with stainless steel roller track at bottom of jamb cover.
- Make a pencil mark at the top and bottom of both Fixed Panel Clip openings on jamb cover.



- Remove jamb cover by placing finger in at the top and pulling straight out of the jamb.
- Place Fixed Panel Clip between pencil marks and mark screw hole locations.
- Drill 1/8" pilot hole and apply 1 #8 1" white pan head screw through clip.
- Next pilot hole through jamb into sub-jamb and apply 2 1/2" pan head screw through clip into jamb. Repeat at head end of sash.
- Reinstall jamb cover and rubber stops.



- This process will be performed in both fixed panels of a 3 and 4 lite door.